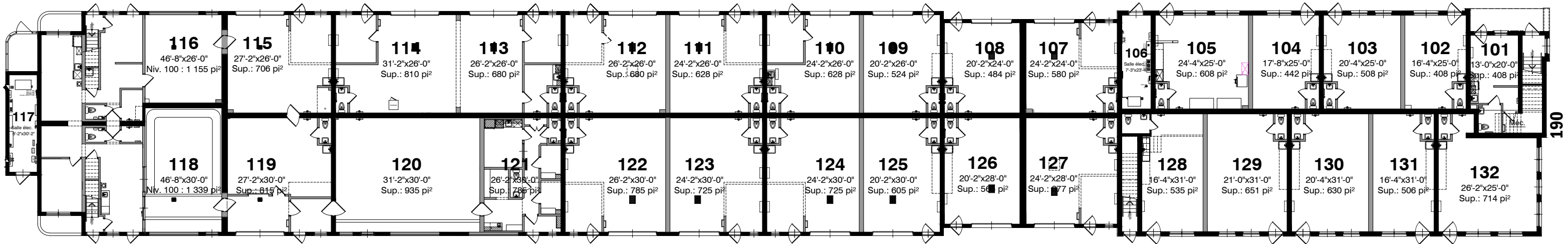
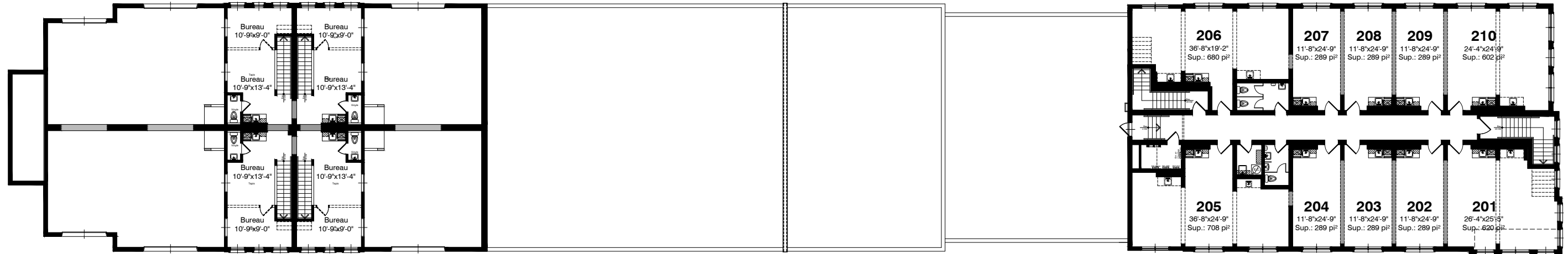
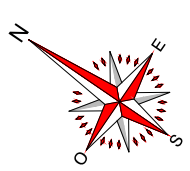


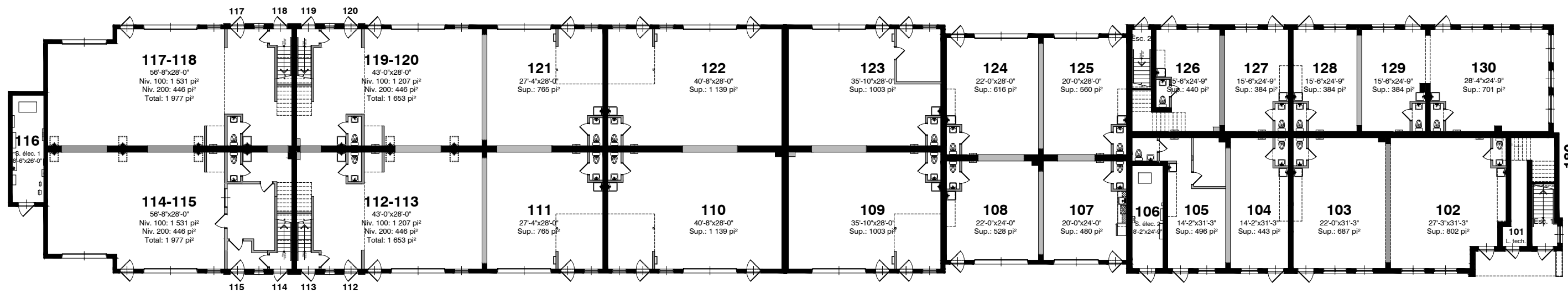
Niveau 200
 Aire de plancher: 7 351 pi²
 Espaces locatifs: 6 340 pi²



Niveau 100
 Aire de plancher: 20 895 pi²
 Espaces locatifs: 20 241 pi²
 Superficie totale de planchers: 28 246 pi²
 Superficie locative totale: 26 581 pi²



Niveau 200
 Aire de plancher: 7 216 pi²
 Espaces locatifs: 6 128 pi²



Niveau 100
 Aire de plancher: 19 017 pi²
 Espaces locatifs: 18 195 pi²

Superficie totale de planchers: 26 233 pi²
 Superficie locative totale: 24 323 pi²